



# PRODUCT SPECIFICATION

REV A January 2011

Oscilent Controlled Document

Ordering Code / Part Number	Product Description
835-IF43.0M-06A	43.00 MHz IF SAW Filter 6.50 MHz Bandwidth

## Specification Contents

- o Mechanical Dimensions
- o Test Circuit
- o Maximum Ratings
- o Electrical Specification
- o Frequency Response

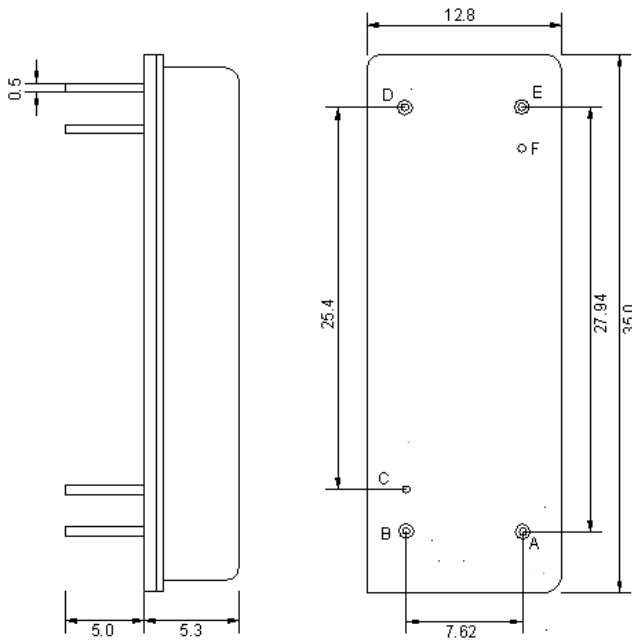
## Notes

- o Electrostatic Sensitive Device (ESD) 
- o Avoid excessive ultrasonic exposure
- o Solderability compatible with JEDEC J-STD-020C Pb-free process, 260°C peak reflow temperature
- o This product complies with EU directive 2002/95/EC (RoHS compliance)



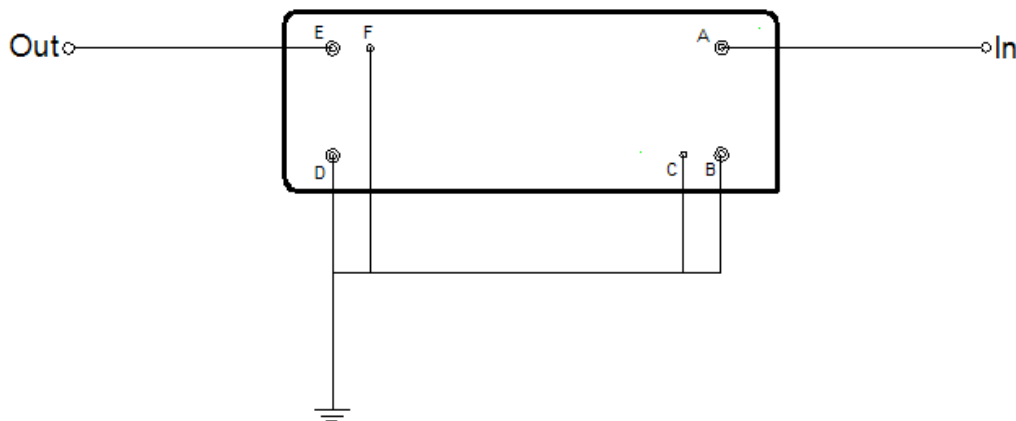


### Mechanical Dimensions (mm)



Pin Description	
B, C, D, F	Ground
A	In
E	Out

### Test Circuit



Source & Load Impedance: 50  $\Omega$



## Maximum Ratings

Parameters Description	Unit	Minimum	Typical	Maximum
Operating Temperature Range	°C	-30	-	80
Storage Temperature Range	°C	-40	-	85
Maximum DC Voltage	V	-	-	10
Maximum Input Power	dBm	-	-	10
Source Impedance (single ended) <sup>(1)</sup>	Ω	-	50	-
Load Impedance (single ended) <sup>(1)</sup>	Ω	-	50	-

Notes: With Matching Network (Ref. Testing Environment Circuit as shown above).

Those impedances could be modified with different impedance values and/or structures, if necessary.

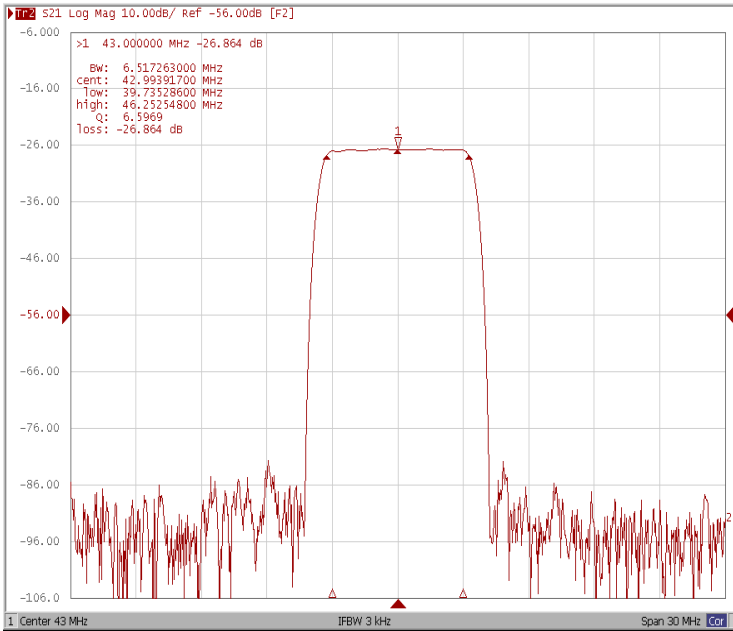
## Electrical Specification

Parameters Description	Unit	Minimum	Typical	Maximum
Center Frequency (Fo)	MHz	-	43.00	-
Insertion Loss at Fo	dB	-	26.80	28.00
Amplitude Ripple Variation at Fo ±3.00 MHz	dB <sub>p-p</sub>	-	0.45	0.90
Group Delay Variation at Fo ±3.00 MHz	nsec	-	50	90
Absolute Delay at Fo	µsec	-	2.61	-
Bandwidth at -1.0 dB	MHz	6.30	6.50	-
Bandwidth at -3.0 dB	MHz	-	6.85	-
Bandwidth at -40.0 dB	MHz	-	8.20	8.40
Bandwidth at -50.0 dB	MHz	-	8.30	8.50
Relative Attenuation				
Lower Sidelobe	dB	50	55	-
Upper Sidelobe	dB	50	55	-
Temperature Coefficient	ppm/°C	-	-94	-

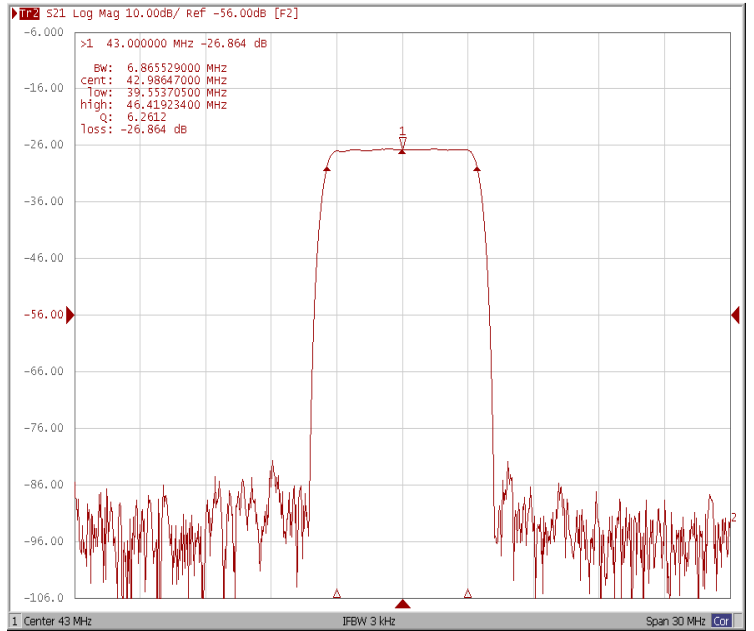


## Frequency Response

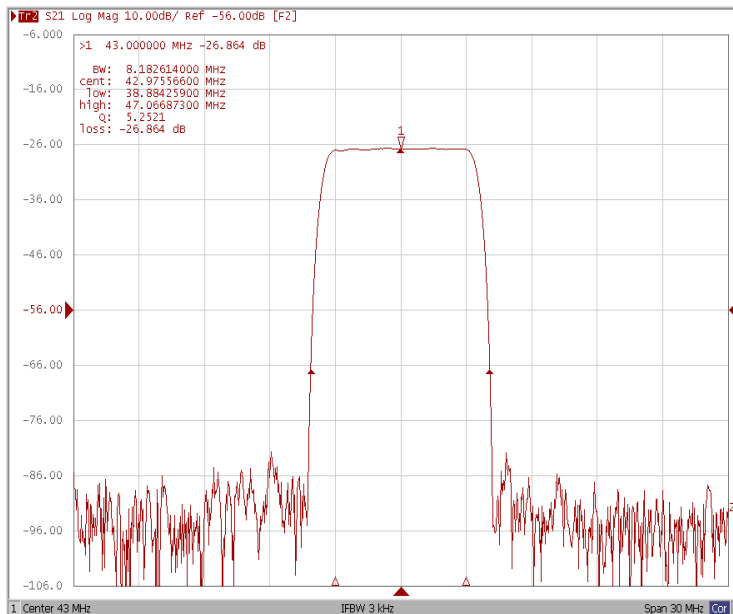
### Bandwidth at -1.0 dB



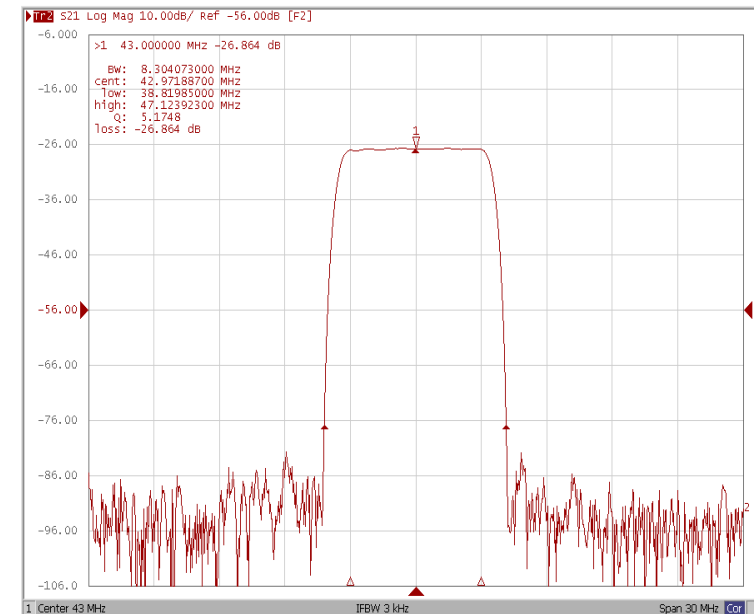
### Bandwidth at -3.0 dB



### Bandwidth at -40.0 dB



### Bandwidth at -50.0 dB



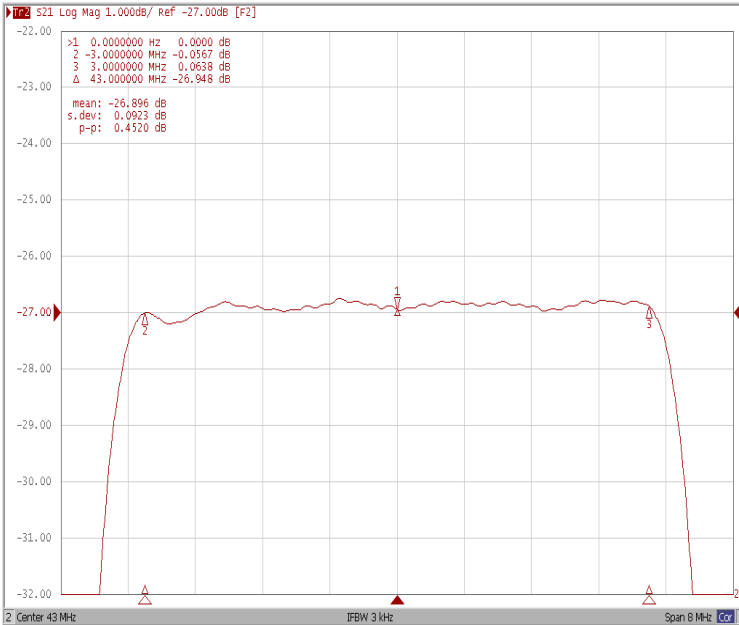


January 2011 Rev A

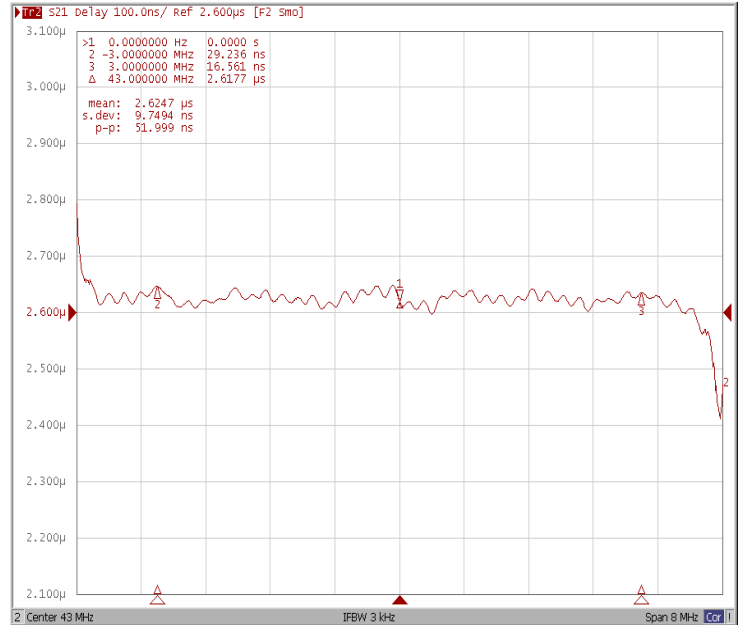
Oscilent Part Number  
**835-IF43.0M-06A**

43.00 MHz IF SAW Filter 6.50 MHz Bandwidth

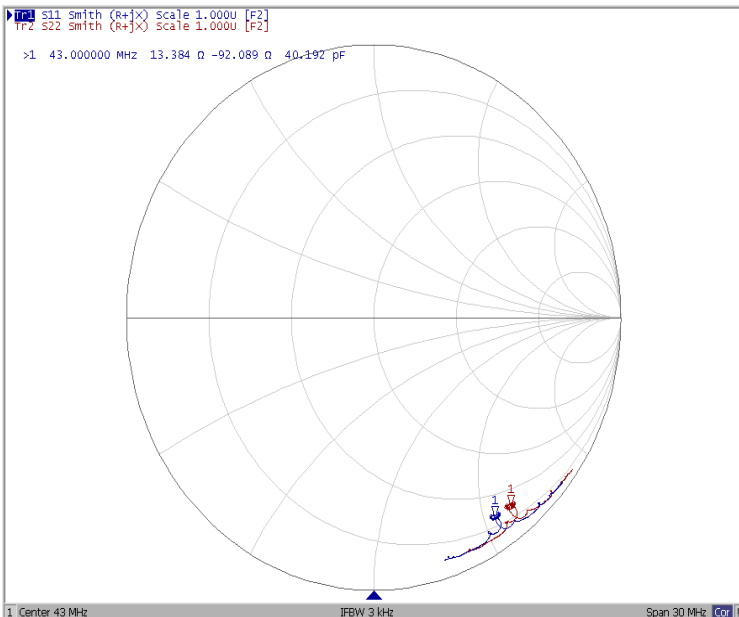
### Ripple Variation at Fo $\pm 3.00$ MHz



### Group Delay Variation at Fo $\pm 3.00$ MHz



### Smith Chart



### SWR

