



# PRODUCT SPECIFICATION

REV A January 2011

Oscilent Controlled Document

Ordering Code / Part Number	Product Description
821-IF120.0M-11A	120.0 MHz IF SAW Filter 11.0MHz Bandwidth

## Specification Contents

- o Mechanical Dimensions
- o Test Circuit
- o Maximum Ratings
- o Electrical Specification
- o Frequency Response
- o Smith Chart
- o VSWR

## Notes

- o Electrostatic Sensitive Device (ESD) 
- o Avoid excessive ultrasonic exposure
- o Solderability compatible with JEDEC J-STD-020C Pb-free process, 260°C peak reflow temperature
- o This product complies with EU directive 2002/95/EC (RoHS compliance)



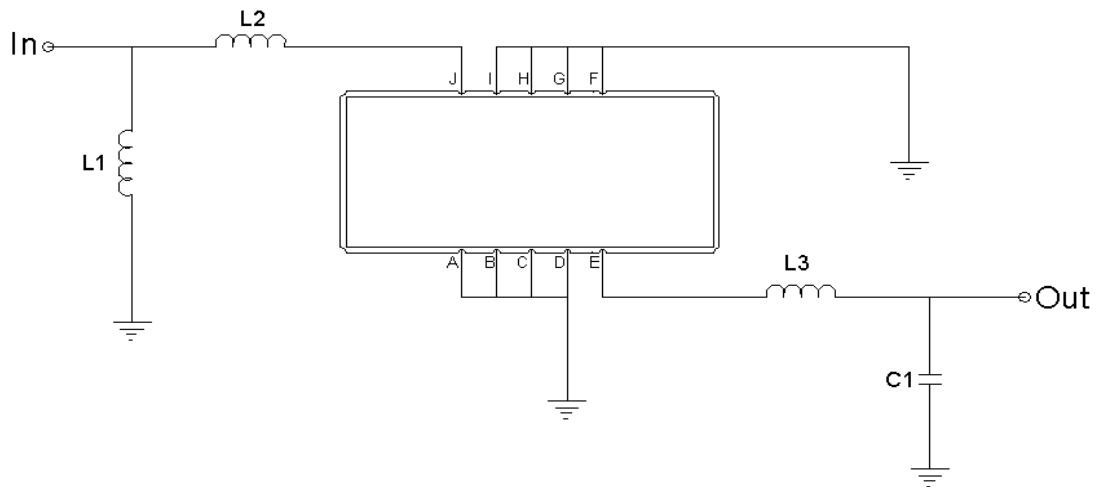


## Mechanical Dimensions (mm)



Pin Description	
A, B, C, D, F, G, H, I	Ground
J	Input
E	Output

## Test Circuit



Test Fixture & Values	
Input	L1=39nH, L2=12nH
Output	L3=47nH, C1=33pF
Source/Load Impedance	50 Ω



## Maximum Ratings

Parameters Description	Unit	Minimum	Typical	Maximum
Operating Temperature Range	°C	-30	-	+80
Storage Temperature Range	°C	-40	-	+85
Maximum DC Voltage	V	-	-	10
Maximum Input Power	dBm	-	-	10
Source Impedance (single ended) <sup>(1)</sup>	Ω	-	50	-
Load Impedance (single ended) <sup>(1)</sup>	Ω	-	50	-

Notes: With Matching Network (Ref. Testing Environment Circuit as shown above).

Those impedances could be modified with different impedance values and/or structures, if necessary.

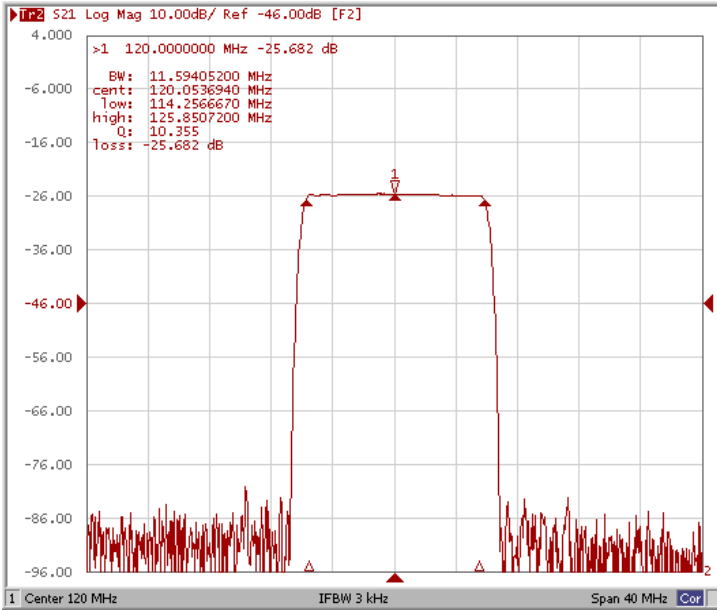
## Electrical Specification

Parameters Description	Unit	Minimum	Typical	Maximum
Center Frequency (Fo)	MHz	119.9	120.0	120.1
Insertion Loss at Fo	dB	-	25.7	27.0
Amplitude Ripple Variation at Fo ±5.5 MHz	dB <sub>p-p</sub>	-	0.5	1.0
Group Delay Variation at Fo ±5.5 MHz	nsec	-	45	100
Absolute Delay at Fo	μsec	-	3.14	-
Temperature Coefficient	ppm/°C	-	-72	-
Bandwidth at -1.0 dB	MHz	-	11.55	-
Bandwidth at -3.0 dB	MHz	11.70	11.93	-
Bandwidth at -30.0 dB	MHz	-	13.10	-
Bandwidth at -45.0 dB	MHz	-	13.40	14.00
Lower Sidelobe	dB	50	55	-
Upper Sidelobe	dB	50	55	-

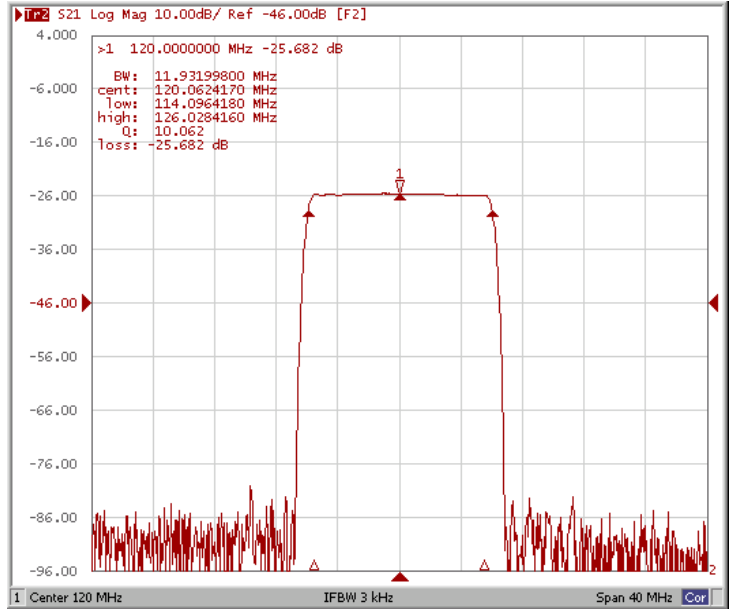


### Frequency Response

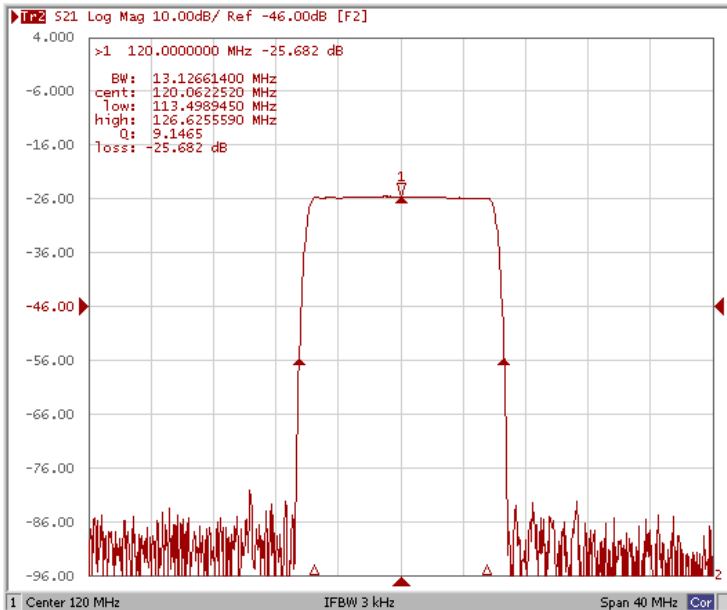
#### Bandwidth at -1.0 dB



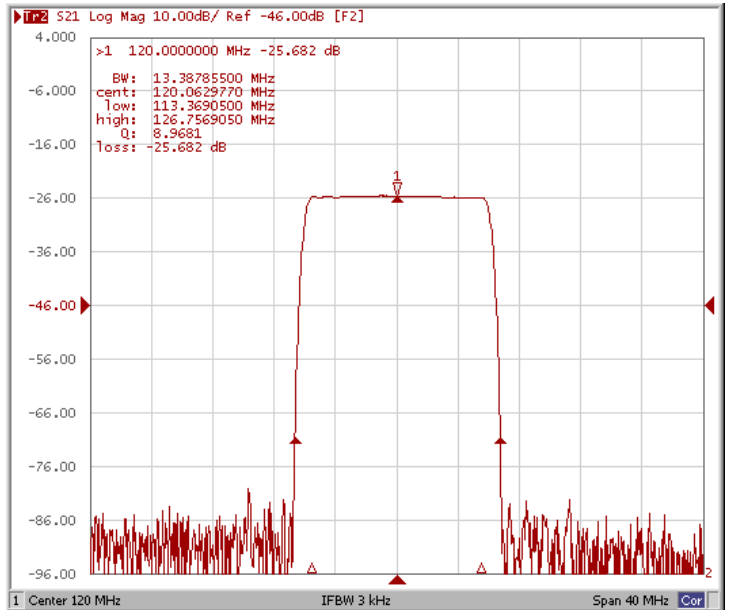
#### Bandwidth at -3.0 dB



#### Bandwidth at -30.0 dB

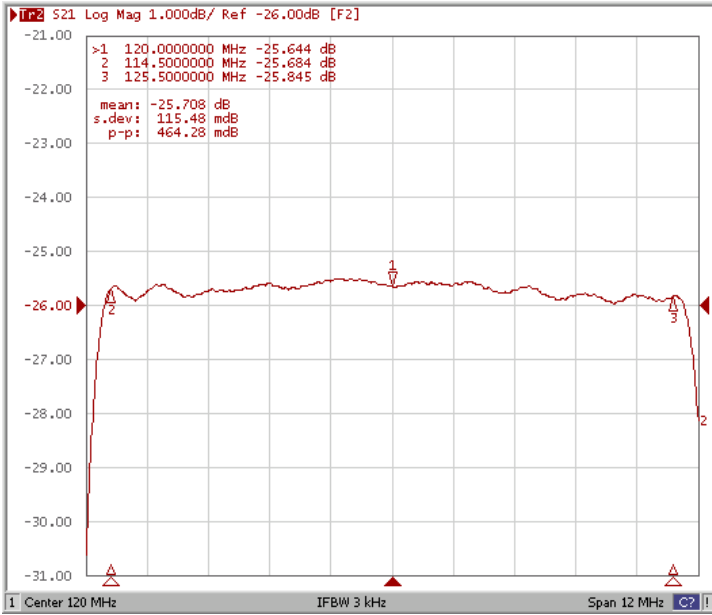


#### Bandwidth at -45.0 dB

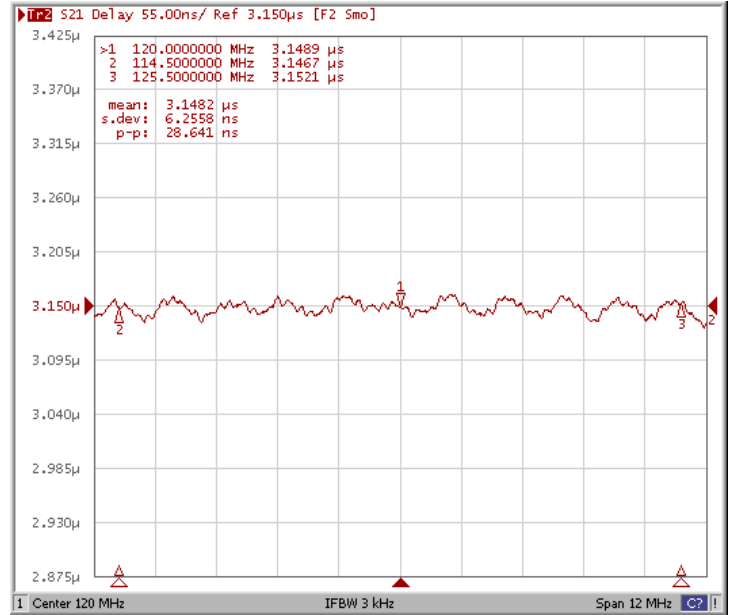




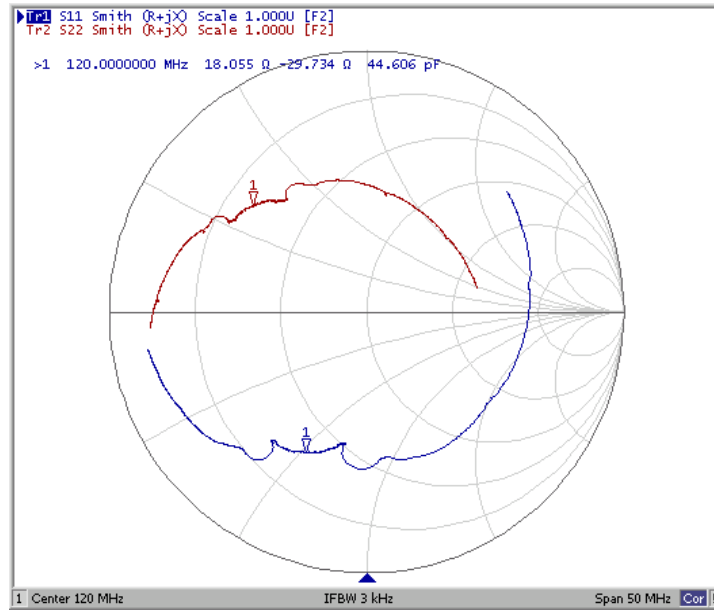
### Ripple Variation



### Group Delay Variation



### Smith Chart





### VSWR

