

**Data Sheet**

Corporation


 telephone
 949 252 0522


BACK

Product Category: Ceramic Resonator

Series Number	Package	Description	Last Modified
672 ~ 673	ZTACS / ZTTCS Ceramic	SMD Resonator	Jan. 01 2007

FEATURES

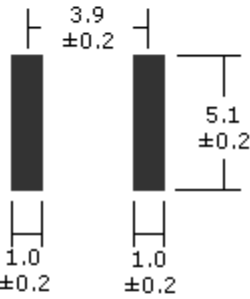
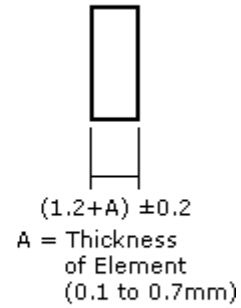
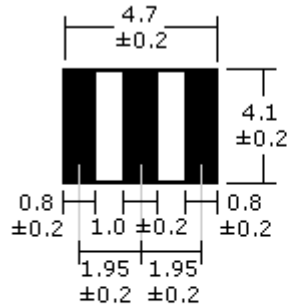
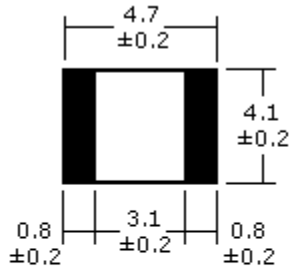
- Extended temperature range
- High stability Ceramic Resonator
- RoHs Compliant

**OPERATING CONDITIONS / ELECTRICAL CHARACTERISTICS**

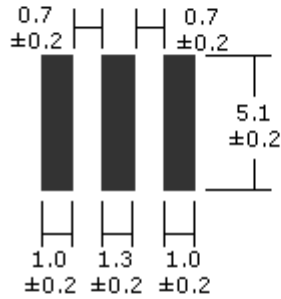
Series No.	Type	Fig	Frequency Range*	Frequency Accuracy	Stability in Temperature	Aging for Ten Years
			(MHz)	@ 25° (MHz)	-20° ~ +80°C	-
672	ZTACS	1	6.0 ~ 13.0	±0.5%	±0.4%	±0.3%
			13.01 ~ 60.0		±0.3%	
673	ZTTCS	2	6.0 ~ 13.0		±0.4%	
			13.01 ~ 60.0		±0.3%	

*Higher Freq. Avail. Contact Oscilent for assistance.

PACKAGE DIMENSIONS (mm)



Recommended Land Pattern



Recommended Land Pattern

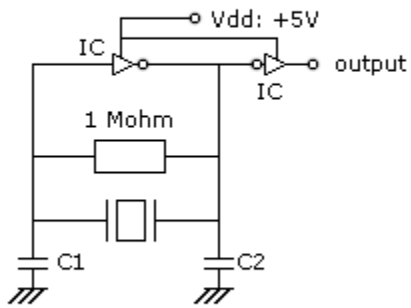


Figure 1) ZTACS

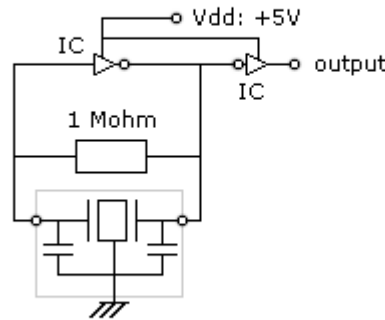


Figure 2) ZTTCS

Test Circuit IC

Freq. 6.0 ~ 13.0 MHz: IC: 1/6TC4069UBPx2
 13.01 ~ 60.0 MHz: IC: 1/6TC74HCU04x2

672 Series: VALUES of C1 & C2 (for test circuit only)

Frequency Range (MHz)	Ro (ohm)	C1 = C2 (pF)	TC
8.00 ~ 13.00	25 max.	30 ±20%	0.4 %
13.01 ~ 20.00	40 max.	30 ±20%	0.3 %
20.01 ~ 25.99	40 max.	15 ±20%	0.3 %
26.01 ~ 50.00	40 max.	5 ±20%	0.3 %

673 Series: VALUES of C1 & C2 (for built in capacitors only)

Frequency Range (MHz)	Ro (ohm)	C1 = C2 (pF)	TC
8.00 ~ 13.00	30	22 ±20%	0.4 %
13.01 ~ 16.00	40	22 ±20%	0.3 %
16.01 ~ 40.00	40	15 ±20%	0.3 %
40.01 ~ 50.00	40	5 ±20%	0.3 %

PART NUMBER GUIDE

Part Number	Frequency	Load Capacitance	Frequency	Operating	Packaging**
-------------	-----------	------------------	-----------	-----------	-------------

			Accuracy (%)	Temp (°C)	
672	- 12.0M	- 33	- 03	W	
672 = ZTACS 673 = ZTTCS	e.g. -12.0M = 12.000 MHz Std. Range = 6.0 ~ 60.0 MHz Higher Freq. Avail. Contact Oscilent for assistance.	Blank* = Standard as shown in above Table or Fill in the blank e.g 33 = 33pF	Blank* = ±0.5% -03 = ±0.3%	Blank* = -20 ~ +80 -N = -40 ~ +85 -W = -40 ~ +125	Blank* = Bulk -TR = Tape/ Reel

NOTE: Deviations on all parameters available. Please consult Oscilent for details.

DEFINITIONS: Click on the characteristic names above, for definitions of the particular characteristic.

***STANDARDS:** "Blank" part number selections, indicate standard variables for the particular characteristic.

****PACKAGING:** Click on the packaging name above for Tape/Reel specifications

Oscilent Corporation - CALL **949.252.0522**

Series No.: [672 to 673](#)

18195 East McDermott Street . Building D . Irvine . CA 92614 . USA

Fax: 949.252.0599 . E-Mail: Sales@Oscilent.com